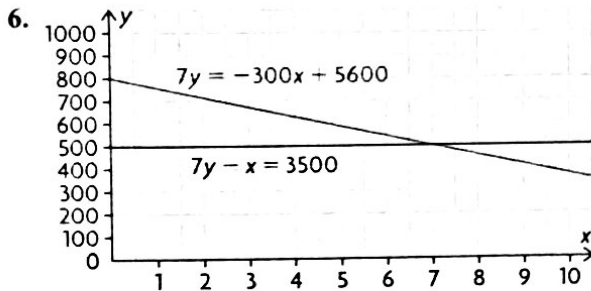


REVIEW OF TERMS AND CONNECTIONS ANSWERS

1. a) iv) d) ii) g) vii)
 b) i) e) vi)
 c) v) f) iii)
2. a) $\frac{1}{2}$; 0.5 c) $\frac{2}{25}$; 0.08 e) $\frac{1}{400}$; 0.0025
 b) $\frac{13}{100}$; 0.13 d) $\frac{19}{1000}$; 0.019
3. a) \$14.30 b) \$5.25 c) \$1.08
4. a) 8.0169 b) 624.9932 c) 0.0013
5. a) \$252.20 b) \$454.76



7. a) $\frac{16}{6}$ or $\frac{8}{3}$; 2.67; 267% c) $\frac{124}{50}$ or $\frac{62}{25}$; 2.48; 248%
 b) $\frac{115}{40}$ or $\frac{23}{8}$; 2.875; 287.5%
8. a) 37.5% b) 34.78% c) 40.32%
9. C, B, A, D
10. a) \$2175, \$16 675 b) \$9.00, \$68.99 c) \$22.65, \$173.63
11. a) $\frac{17}{52}$; 0.33 b) $\frac{31}{12}$; 2.58 c) $\frac{45}{52}$; 0.87 d) $\frac{123}{12}$; 10.25
12. a) 587, 525, 463, **401**, **339**, 277
 b) 10, 12, 14.4, **17.28**, **20.736**, 24.8832
 c) 3, **6**, 12, 24, **48**, 96
13. a) $y = -\frac{2}{3}x + 1$; $y = -1$ b) $y = -\frac{1}{3}x + \frac{2}{3}$; $y = -\frac{1}{3}$
14. a) 1.02 b) 344.70
15. $x = -2y + \frac{1}{3}z$; $y = -\frac{1}{2}x + \frac{1}{6}z$; $z = 3x + 6y$